



## Press Release

### **IFAT 2016: Vogelsang presents a new generation of the XRipper twin-shaft grinder**

#### **New products for the waste management industry and wastewater area**

**Essen (Oldb.), April 20, 2016** – Hugo Vogelsang Maschinenbau GmbH will attend IFAT (May 30 to June 3 in Munich) as a partner for pumping, shredding, and disintegration technology. At **booth 247/346 in Hall A6**, Vogelsang wastewater collection and treatment technology takes center stage. "In the operation of sewage treatment plants and channels, coarse matter often clogs the pumps, pipes and fittings and thus disrupts operating processes. The new generation of our twin-shaft shredder XRipper reliably reduces these to an unproblematic size. The foreign-matter resistance and ease of service and maintenance of the extended model range of the IQ series rotary lobe pumps as well as the CC series progressive cavity pumps ensure smooth wastewater pumping," says Harald Vogelsang, managing director of Hugo Vogelsang Maschinenbau GmbH.

#### **The new XRipper sending channel monsters on their way**

Among other things, the new housing geometry of the optimized XRipper generation achieves significantly higher throughput rates. These can be further increased with an optional feature. The results are reduced investment and operating costs. In addition, the new XRipper models shred even better and more evenly. The proven, monolithic ripper rotors allow the XRipper to reliably shred stubborn coarse matter preventing blockages where conventional cutting discs may block or even damage. Replacing the ripper rotors is quick and easy.

#### **XRipper XRC (XRipper for Channels)**

Furthermore, Vogelsang has expanded the model range of the XRipper XRC. Effective immediately, the new XRC-100 series provides extremely compact units. Due to their small dimensions, they can be installed in even the narrowest channels (from 300 mm wide). The XRipper XRC thus reliably prevents downstream pumps and valves from getting clogged. The optimized Sewer Integration Kit (SIK) makes it easy for the XRipper to be flexibly installed in open channels or in front of intakes in shafts with slanted or round walls.

#### **XRipper XRP (XRipper for Pipelines)**

The XRipper XRP has the optimal type of construction for inline installation in sewage pipelines and other confined spaces, such as a duct (installation in the pipe from 406 mm deep). For maintenance, gearboxes together with shafts and ripper rotors can be lifted out of the housing and easily serviced within confined spaces. The easily accessible ripper rotors and cartridge seals allow quick and easy parts replacement.

**Rotary lobe pump from the IQ series: Larger series for higher outputs**

Due to the high market demand, Vogelsang is introducing a larger range of the IQ series at IFAT. This larger series reaches capacities of up to 154 cbm/h and pressures up to 7 bar. The number of essential spare parts has been reduced by half for the IQ series, significantly cutting the time it takes to replace wear parts. As the pump chamber can be dismantled in just a few easy steps, the pumping elements are easy to reach for servicing and maintenance work. When any of the wear parts have to be replaced from the pump chamber to the seal, the pump remains firmly screwed in the pipeline. The integrated liquid buffer and the InjectionSystem prevent foreign matter damage and dry running of the pump and at the same time increase their suction capacity. Variable connections make assembly easier and are suitable for all common installation situations.

**CC series – the progressive cavity pump with the SERVICEplus**

For the first time, Vogelsang introduces the progressive cavity pump CC (CavityComfort) for the wastewater area. "Compared to conventional progressive cavity pumps, we reduce space requirements and the time required for service or maintenance work by up to 50 percent," explains Vogelsang. "There is no need to dismantle pipes or individually remove a large number of parts. You can simply exchange the entire rotating unit or just the rotor and stator with a new unit. Additionally, the mechanical seal can be replaced without opening the pump.

Vogelsang provides the pumps with capacities of up to 225 cbm/h at peak pressures of up to 12 bar. The smallest size, the CC55 with a capacity of up to 80 cbm/h, is introduced at IFAT.

**Vogelsang at the IFAT, May 30 – June 3, 2016, Messe München:**

**Products for the wastewater area: Hall A6, booth 247/346**

**Products for the food industry: Hall B3, booth 224**

For further information: [www.vogelsang.info](http://www.vogelsang.info)

**Press contact:**

Hugo Vogelsang Maschinenbau GmbH  
Martina Ekert  
Head of Marketing  
Holthöge 10-14  
D-49632 Essen/Oldb.  
Tel.: +49 5434-83-231  
Mail: [ekert@vogelsang-gmbh.com](mailto:ekert@vogelsang-gmbh.com)  
Web: [www.vogelsang.info](http://www.vogelsang.info)

VOCATO public relations  
Corinna Bause,  
Jonas Kückelmann  
Braugasse 12  
50859 Cologne, Germany  
+49 2234 60198-19 / -14  
[cbause@vocato.com](mailto:cbause@vocato.com) /  
[jkueckelmann@vocato.com](mailto:jkueckelmann@vocato.com)  
[www.vocato-pr.de](http://www.vocato-pr.de)

**About Vogelsang:**

Hugo Vogelsang Maschinenbau GmbH is an internationally operating machine construction company which is headquartered in the municipality of Essen/Oldb. in Lower Saxony. Founded in 1929 as a manufacturer of agricultural machinery, the company has grown to become a specialist in pumping, shredding, distribution and spreading technology for the agricultural, biogas, industrial and municipal sectors. Today, the company's major business areas are biogas, waste water, and vacuum disposal technology alongside agriculture. Vogelsang currently employs 650 employees worldwide. The group comprises 20 subsidiaries and branches, 3 international sales offices as well as 2 production facilities in Germany. Supplemented by a global dealer network, the company exports its products to all European countries, as well as to the world's important industrial nations. Further information can be found online at: [www.vogelsang.info](http://www.vogelsang.info)



Images:



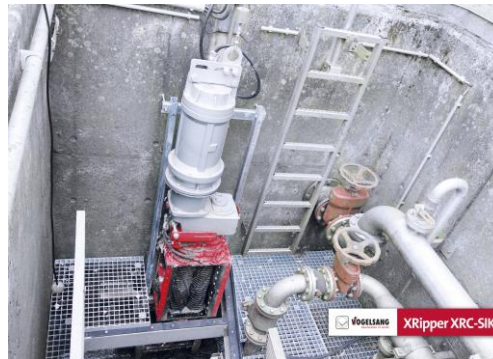
**Image 1:** The XRipper XRP for pipes



**Image 2:** The XRipper XRP for installation in confined spaces (application image)



**Image 3:** The XRipper XRC for wastewater channels



**Image 4:** The XRipper XRC with SIK installed directly in front of an intake structure. (application image)



**Image 5:** The new, stronger IQ152 rotary lobe pump



**Image 6:** The progressive cavity pump CC series with innovative SERVICEplus concept

Image source for all images: Vogelsang